

# caruso

acoustic & lighting comfort



**Tessuti**

## Specifiche tecniche / Technical Data

Descrizione del test Test Description	Norma Norm	Unità di misura Unit of measure	Valori e tolleranze Values
<b>Composizione</b> Composition	Direttive CEE	%	100% PL FR
<b>Lunghezza e Altezza pezza</b> Piece length and width	UNI 5113	m.	40 ± 5% 1.95 ± 3%
<b>Grammatura</b> Weight	UNI EN 12127	gr./m <sup>2</sup>	185 ± 5%
<b>Numeri fili Ordito</b> Number yarn Warp	UNI EN 1049-2	n°/cm.	16/cm ± 2
<b>Numeri fili Trama</b> Number yarn Weft	UNI EN 1049-2	n°/cm.	25/cm. ± 2
<b>Resistenza all'abrasione Martindale 12 KPA</b> Abrasion test-Martindale 12 KPA	UNI EN ISO 12947	cicli cycles	25.000 ± 5.000
<b>Pilling - Metodo Martindale</b> Pilling - Martindale Method	ISO 12945-2	grado degree 1-5	4 ± 1
<b>Resistenza alla trazione nel verso dell'ordito</b> Tensile strength - Warp	UNI EN ISO 13934	Kg / %	50 ± 5 30% ± 10
<b>Resistenza alla trazione nel verso della trama</b> Tensile strength - Weft	UNI EN ISO 13934	Kg / %	105 ± 5 185% ± 10
<b>Stabilità dimensionale lavaggio a 40° Ordito</b> Dimensional stability washing process at 40° - Warp	UNI EN 26330 ISO 6330:1984	%	2 ± 1
<b>Stabilità dimensionale lavaggio a 40° Trama</b> Dimensional stability washing process at 40° - Weft	UNI EN 26330 ISO 6330:1984	%	2 ± 1
<b>Solidità della tinta agli acidi e alcali</b> Colour fastness to acids and alkali	UNI EN ISO 105 E05-E06	grado degree 1-5	4 ± 1
<b>Resistenza allo sfregamento a secco</b> Rubbing Fastness - Dry	EN ISO 105X12	grado degree 1-5	4 ± 1
<b>Resistenza allo sfregamento a umido</b> Rubbing Fastness - Humid	EN ISO 105X12	grado degree 1-5	4 ± 1
<b>Solidità al sudore acido e alcalino</b> Acid and alkaline perspiration fastness	UNI EN ISO 105 E04	grado degree 1-5	4 ± 1
<b>Solidità alla luce Artificiale (Xenotest)</b> Lightfastness (Xenotest)	EN ISO 105 B02 Scala dei blu	grado degree 1-8	5 ± 1
<b>Solidità della tinta al lavaggio a secco</b> Colour fastness to dry cleaning	UNI EN ISO 105 D01	grado degree 1-5	4 ± 1
<b>Solidità della tinta al lavaggio a 40° C.</b> Colour washing fastness at 40° C.	UNI EN 20105-C01	grado degree 1-5	4 ± 1
<b>Manutenzione</b> Maintenance	Usare con regolarità l'aspirapolvere a beccuccio liscio, non spazzolare. Use the vacuum-cleaner with smooth spout regularly, don't brush.		
<b>Simbologia di Manutenzione</b> Symbols Maintenance	UNI 8423		
<b>Potere Calorifico PL Trevira CS: 20.000 Kj/Kg = 4.800 KCal</b> Calorific Power of PL Trevira CS: 20.000 Kj/Kg= 4.800 KCal			
<b>Certificazioni:</b> Certifications:	Classe 1 Sipari, Drappeggi, Tendaggi OEKO TEX N. 072150.0 B1 DIN 4102		

# caruso

acoustic & lighting comfort

La presente cartella annulla e sostituisce tutte le precedenti  
This colour chart cancels and replaces all previous ones

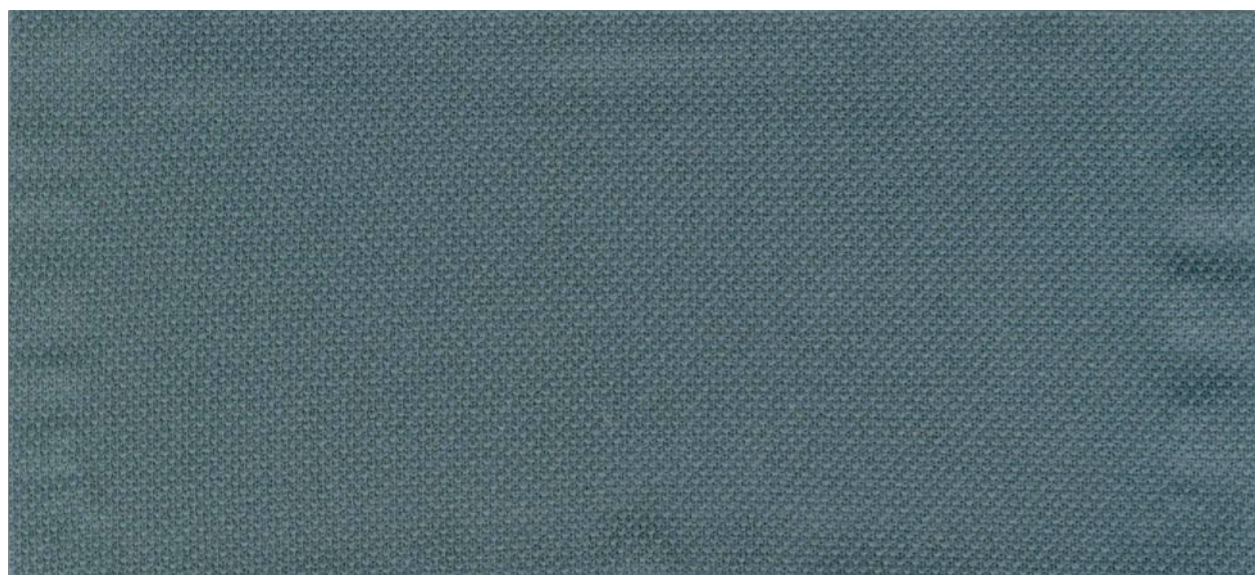
**caruso**  
acoustic & lighting comfort

Via Verdi, 19/21  
43017 San Secondo Parmense  
Parma / Italy  
Tel. +39 0521 877511  
info@carusoacoustic.it / www.carusoacoustic.it

www.carusoacoustic.it

06.2018

Gemma



Gemma



Cod. 48-509



Cod. 48-524



Cod. 48-625



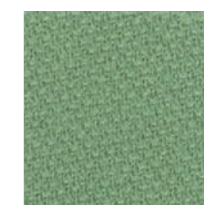
Cod. 48-623



Cod. 48-556



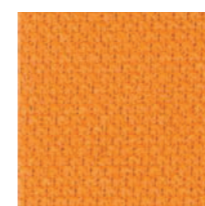
Cod. 48-058



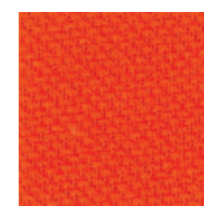
Cod. 48-483



Cod. 48-624



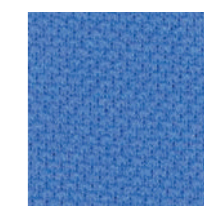
Cod. 48-110



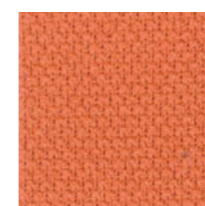
Cod. 48-104



Cod. 48-455



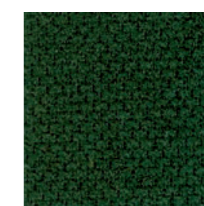
Cod. 48-352



Cod. 48-164



Cod. 48-203



Cod. 48-485



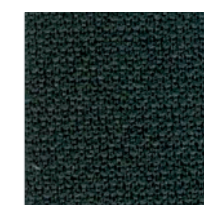
Cod. 48-311



Cod. 48-221



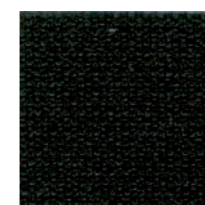
Cod. 48-222



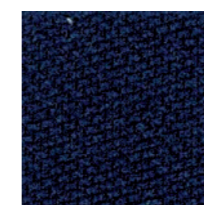
Cod. 48-626



Cod. 48-317



Cod. 48-651



Cod. 48-307