



RIVESTIMENTI
SILVER

2020



3 PREISGRUPPE
PRICE GROUP
GROUPE DE PRIX
PRECIO DE GRUPO

FAME

interstuhl



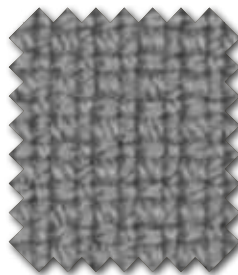
FA15



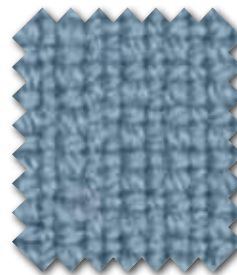
FA01



FA61



FA91



FA32



FAA2



FA44



FA13

Fame

95% Schurwolle
5% Polyamid

95% New wool
5% Polyamide

95% Pure laine
5% Polyamide

95% Lana esquilada
5% Poliamida

630 g/lfm

630 g/rm

630 g/ml

630 g/metro de rollo



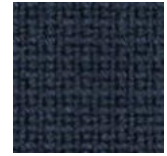
FA02
(66071)



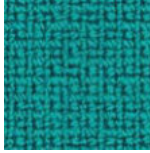
FA07
(60005)



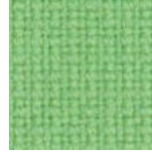
FA16
(62067)



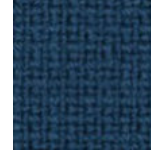
FA21
(60017)



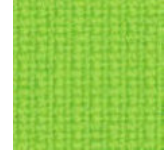
FA24
(67016)



FA54
(68147)



FA62
(67005)



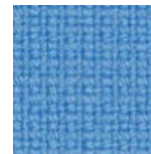
FA64
(68144)



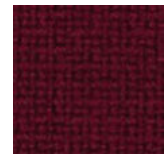
FA72
(67069)



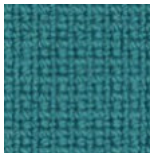
FAB2
(67068)



FAC2
(66118)



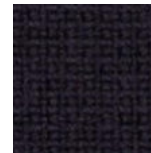
FAH3
(64058)



FAI2
(67067)



FAJ3
(64169)



FAK3
(64055)

Stoffgruppe 3 / Fabric group 3 / Groupe de tissus 3 / Grupo de tapizados 3
(weitere auf Folgeseite / further on the next page / suite sur la page suivante / más en la siguiente página)

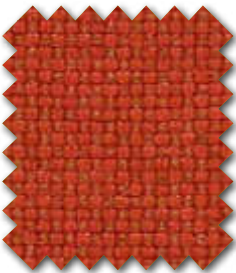
3 PREISGRUPPE
PRICE GROUP
GROUPE DE PRIX
PRECIO DE GRUPO

FIELD

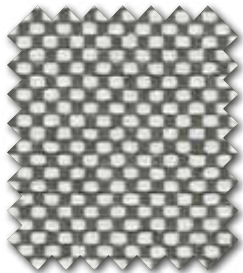
interstuhl



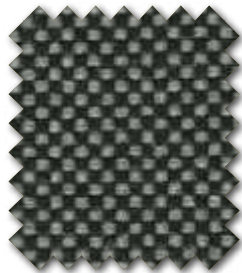
F132



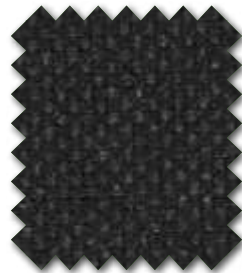
F103



F181



F141



F151

4 HIGH PERFORMANCE

SYNERGY

interstuhl



YS04



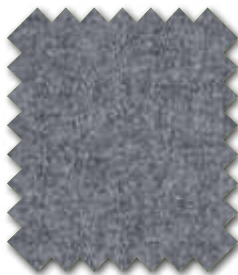
YS25



YS15



YS05



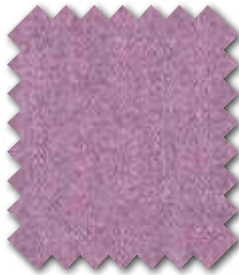
YS01



YS11



YS03



YS13



YS23



YS02

Synergy

95% Schurwolle
5% Polyamid

95% New wool
5% Polyamide

95% Pure laine
5% Polyamide

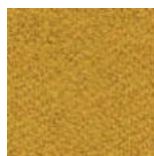
95% Lana esquilada
5% Poliamida

560 g/lfm

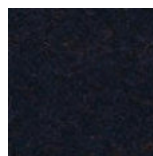
560 g/rm

560 g/ml

560 g/metro de rollo



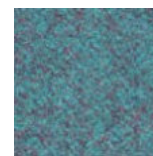
YS16
(LDS28)



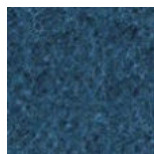
YS22
(LDS61)



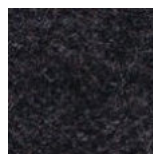
YS26
(LDS45)



YS32
(LDS56)



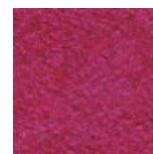
YS34
(LDS59)



YS35
(LDS34)



YS41
(LDS08)



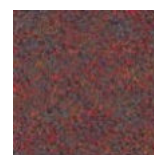
YS43
(LDS36)



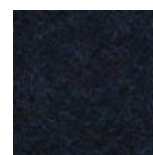
YS44
(LDS58)



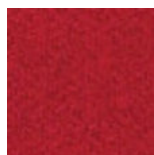
YS51
(LDS17)



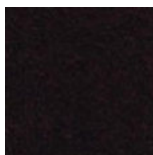
YS53
(LDS76)



YS54
(LDS60)



YS73
(LDS86)



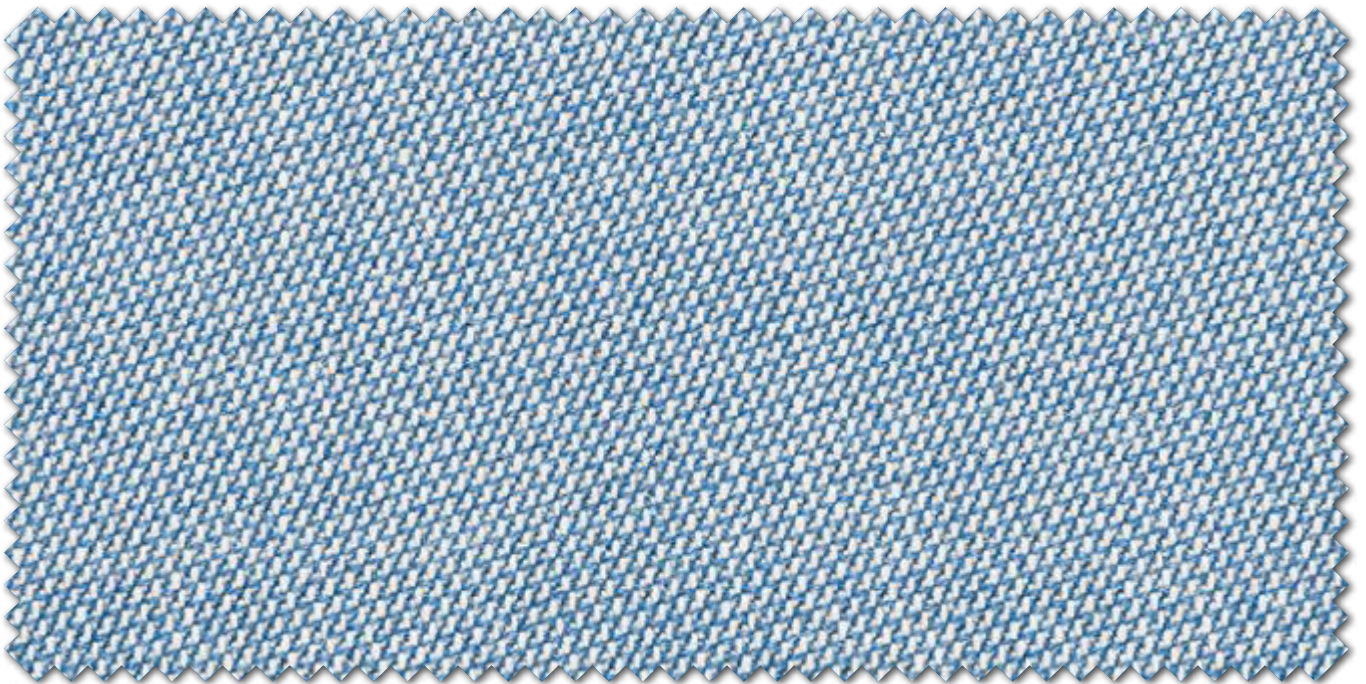
YS93
(LDS88)

Stoffgruppe 4 / Fabric group 4 / Groupe de tissus 4 / Grupo de tapizados 4
(weitere auf Folgeseite / further on the next page / suite sur la page suivante / más en la siguiente página)

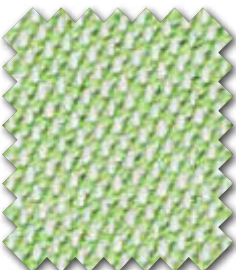
4 HIGH PERFORMANCE

RIME

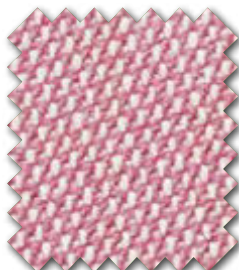
interstuhl



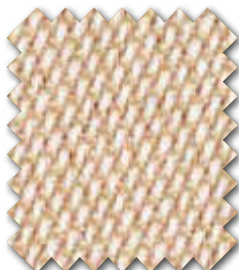
RI02



RI04



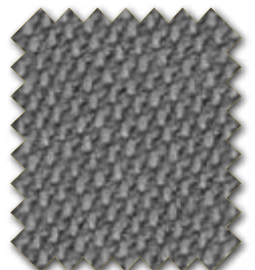
RI13



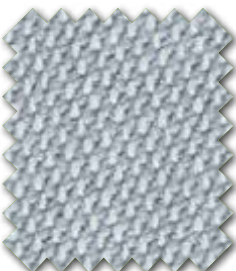
RI03



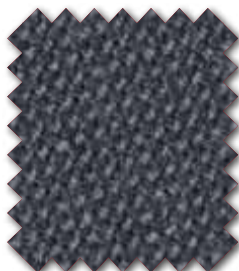
RI05



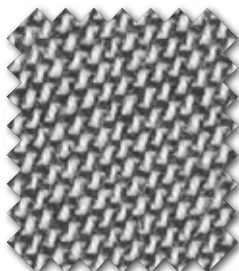
RI15



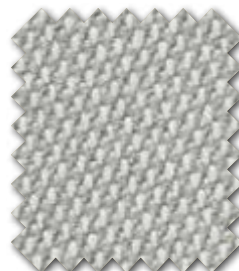
RI21



RI11



RI01



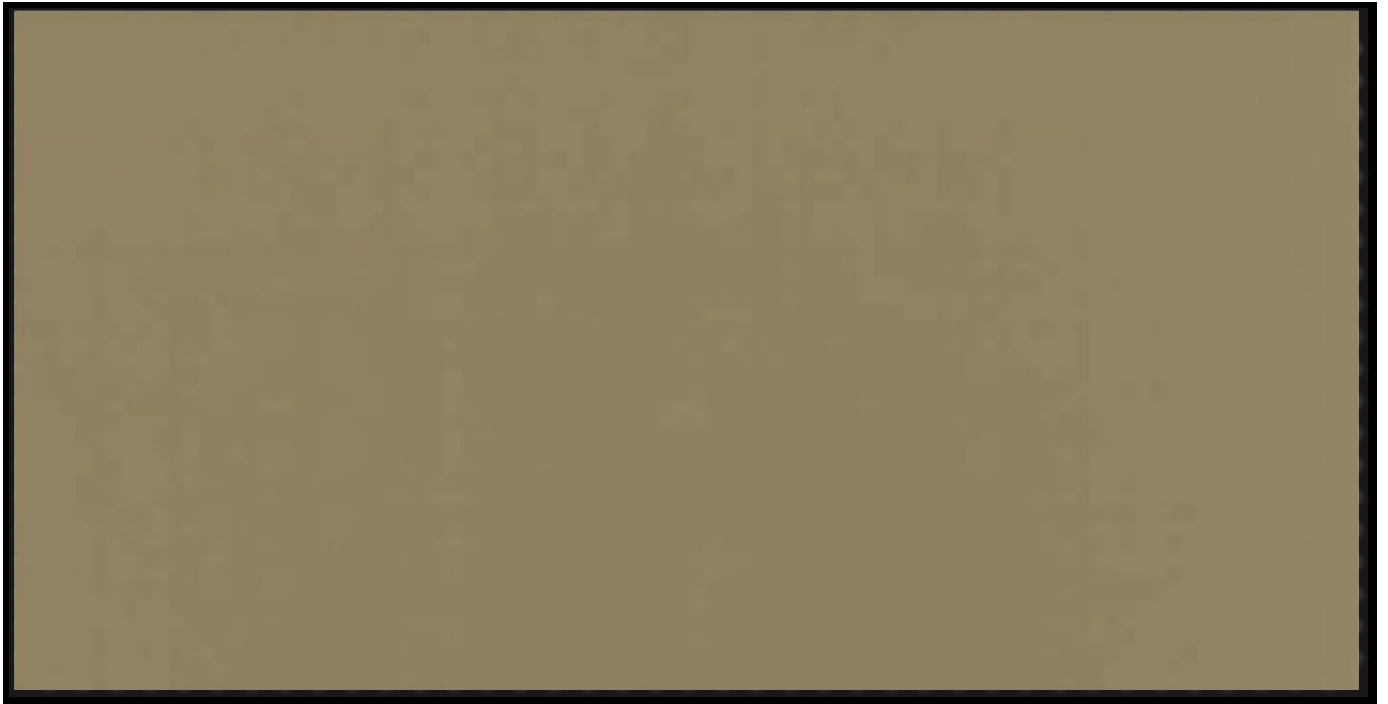
RI31

7*
GENUINE
PREMIUM
LEATHER

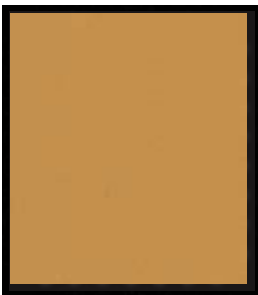


ASCOT

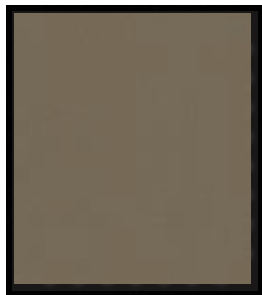
interstuhl



SA85



SAE5



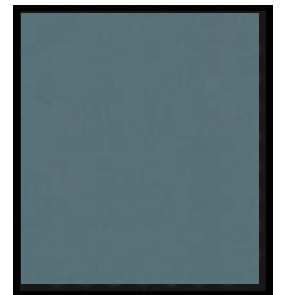
SAB1



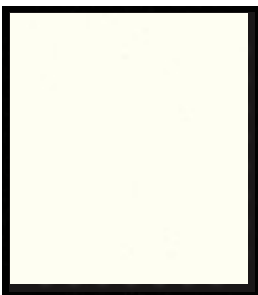
SAG5



SA22



SA82



SA07



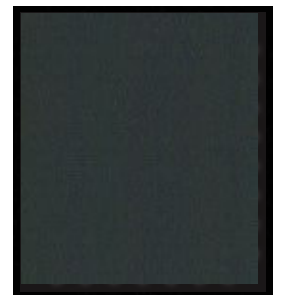
SA17



SAA1



SA51



SA01



SA93



SAC1

* Entspricht Ledergruppe 7 der Preisliste
* Correspond au cuir groupe 7 du tarif public

* Equal to leather group 7 of the price list
* Corresponde a grupo de pieles 7 de la lista de precios



RIVESTIMENTI E TESSUTI : DATI TECNICI

Gruppo	Tessuto	Materiale	Peso	Larghezza in cm	Resistenza all'abrasione EN ISO 12947-2	Valori pilling (1-5) EN ISO 12945-2	Resistenza allo sfregamento 1 (1-5) EN ISO 105X-12	Resistenza alla luce 2 (1-8) EN ISO 105B 02	Standard antincendio								Prezzo in €
									D	A	CH	F	GB	NL	ES		
SG1	Citadel	100% polipropilene FR	320 g/rm	140	≥30,000	3-4	4	6	1;2;3	1;2	1;2	1;2	1;2	1;2;4	1;2;3	1;2;3	49,-
	Era 2	100% poliestere	448 g/rm	140	≥100,000	4-5	4	5	1;2	1;2	1;2	1;2	1;2;4	1;2	1;2	49,-	
	Manhattan 2	100% poliestere riciclato	405 g/rm	140	≥50000	4-5	4	6	1;2	1;2	1;2	1;2	1;2;4	1;2	1;2	49,-	
SG2	Lucia 2	100% poliestere	400 g/rm	140	≥100,000	3-4	4	6	1;2	1;2	1;2	1;2	1;2;4	1;2	1;2	93,-	
	King (L Eleast) 2	100% poliestere (Trevira CS)	365 g/rm	140	70.000	5	4-5	6	1;2;3	1;2	1;2	1;2;3	1;2;3;4	1;2;3;4	1;2;3	93,-	
	Royal	100% poliestere	490 g/rm	150	≥100,000	4-5	4	5	1;2	1;2	1;2	1;2	1;2;4	1;2	1;2	93,-	
	Medley 2	100% poliestere	510 g/rm	140	75.000	4	4-5	5-7	1;2	1;2	1;2	1;2	1;2	1;2	1;2	93,-	
	Amalfi	Ecopelle sintetica 13,85 % PES 86,15 PVC	910 g/rm	140	75.000		5	6	1;2;4	1;2	1;2	1;2;4	1;2	1;2	1;2;4	93,-	
SG3	Fame 2	95% lana vergine 5% poliamide	630 g/rm	140	200.000	4	4-5	5-7	1;2	1;2	1;2	1;2	1;2;3	1;2	1;2	119,-	
	Field 2	100% poliestere (Trevira CS)	450 g/rm	140	100.000	4-5	4-5	5-7	1;2;3	1;2	1;2	1;2	1;2;3	1;2;3	1;2;3	119,-	
	Climatex Ultra 2	72% Cradura™ 16% pura lana vergine 12% Lenzing FR™	437 g/rm	141	> 500.000	4	4-5	6-7	1;2	1;2	1;2	1;2	1;2	1;2	1;2	119,-	
HP4	Synergy 2	95% lana vergine 5% poliamide	560 g/rm	140	≥100,000	3	4	5	1;2	1;2	1;2	1;2	1;2;4	1;2	1;2	138,-	
	Puxx 1,2	Ecopelle sintetica (100% poliuretano)	740 g/rm	145	90.000		4-5	6-7	1;2	1;2	1;2	1;2	1;2;3	1;2	1;2	138,-	
	Rime 2	90% lana vergine pettinata 10% Nylon	580 g/rm	140	100.000	4	4-5	5-6	1;2;4	1;2	1;2	1;2	1;2	1;2	1;2;4	138,-	
LG6	Pelle Nappa 3	pelle tinta anilina					≥ 4	≥ 5	1;2	1;2	1;2	1;2	1;2	1;2	1;2	172,-	
LG7	Pelle Ascot 3	pelle pieno fiore con finitura leggera					≥ 4	≥ 5	1;2	1;2	1;2	1;2	1;2	1;2	1;2	401,-	

¹ B1 su richiesta.

² I materiali hanno la certificazione "Öko-Tex / EU-Flower". Pertanto, i modelli sono conformi alla certificazione "Testato per sostanze nocive".

³ Pelle certificata con "Blue Angel". Pertanto, i modelli sono conformi alla certificazione "Testato per sostanze nocive".

Fire-safety standards

D 1 EN 1021 part 1
2 EN 1021 part 2
3 DIN 4102 part 1; B1
4 DIN 4102 part 1; B2

A 1 EN 1021 part 1
2 EN 1021 part 2

CH 1 EN 1021 part 1
2 EN 1021 part 2

F 1 EN 1021 part 1
2 EN 1021 part 2
3 NF P 92501-7; M1
4 NF P 92503; M2

GB 1 EN 1021 part 1
2 EN 1021 part 2
3 BS 5852 part II
4 BS 7176 Low Hazard

NL 1 EN 1021 part 1
2 EN 1021 part 2
3 DIN 4102 part 1; B1
4 NF P 92501-7; M1

ES 1 EN 1021 part 1
2 EN 1021 part 2
3 DIN 4102 part 1; B1
4 DIN 4102 part 1; B2

¹ EN ISO 105X12
² EN ISO 105B02

RIVESTIMENTI PER SINGOLE FAMIGLIE DI PRODOTTO

Gruppo	Tessuto	Silver	VINTAGE ^{IS5}	Champ	AirPad	Hero	PURE ^{IS3}	JOYCE ^{IS3}	YOSTER ^{IS3}	MOVY ^{IS3}	Goal-Air	Goal	¹ AIM ^{IS1}	¹ EVERY ^{IS1}	XXXL	HUB- Poltrona, Divano, Angolo Divano, Panca, Sgabello, Altalena, Cuscini	HUB- Moduli per pareti divisorie, pare multimediali, pareti mobili, pareti modulari per divano, moduli conferenza, cabine telefoniche	TANGRAM ^{IS5}	LEMON ^{IS5}	LIME ^{IS5}	KINETIC ^{IS5}	¹ BUDDY ^{IS3}	VLEGS ^{IS3} - Sedia per visitatori & panche trasversali	VLEGS ^{IS3} - Panche imbottite	SHUFFLE ^{IS1}	CURVE ^{IS1}
SG1	Citadel					o	x	x	x	x	o	o	x	x		x	x	x				x	x	x	x	x
	Era					x	x	x	x	x	x	x	x	x		x	x	x	x	x		x	x	x	x	x
	Manhattan					x	x	x	x	x	x	x	x	x		x	x					x	x	x	x	x
	Strick							x ²																		
SG2	Lucia		x	x	x	x	x	x	x	x	x	x	x	x		x	x	x	x	x	x	x	x	x	x	x
	King		x	x	x	x	x	x	x	o	x	x	x	x		x	x	x	x	x	x	x	x	x	x	x
	Royal			x	x	x	x	x	x	x	x	x	x	x		x	x					x	x		x	x
	Medley		x	x	x	x	x	x	x	x	x	x	x	x		x	x	x	x	x	x	x	x	x	x	x
	Amalfi			x	x	x	x	x	x	o	x	x	x	x		x		x	x	x	x		x	x	x	
SG3	Fame	x	x	x	x	x	x	x	x	x	x	x	x	x	x	x	x	x	x	x	x	x		x	x	
	Field	x	x	x	x	o	x	x	o	x	x	o	x	x	x	x	x	x	x	x		o		x	x	
	Climatex Ultra									x		x			x	x									x	
HP4	Synergy	x	x	x	x	x	x	x	x	x	x	x	x	x	x	x	x	x	x	x					x	
	PUxx		x	x	x	x	x	x	x	o	x	x		x	x	x		x								
	Rime	x	x	x	x	x	x	x	x	x	x	x		x	x	x	x	x	x	x					x	
LG6	Pelle Nappa		x	x	x	o	x	x	o	x	x	x	x	o	o							x	x	x		
LG7	Pelle Ascot	x	x	x	x	x	x	x	x	x			x			x		x	x	x	x		x	x		
Due colori di rivestimento diversi nello stesso gruppo di tessuti per sedile e schienale comportano un aumento in €			19			19	19	19	19	19	19	19	19													

o = aumenta grinze e pieghe

Note:

¹ Per le collezioni EVERY, BUDDY e AIM con Chillback e schienale imbottito scegliere il tessuto solo nelle pagine della collezione.

² Solo per i modelli in rete e softback JOYCE.